



May Meeting
At the Museum of Arts and
Sciences on Monday,
May 02, 2016 at 7:30pm.

Jose Santamaria will be our speaker for the May meeting. Jose is the Executive Director of the Tellus Science Museum, he will be talking about the new book "Georgia Minerals" and another book "The 50 Coolest Things at Tellus". Also Jose will be talking about upcoming events at the Tellus Museum.

President's Message

I want to thank Tina for the presentation this month. It was a very enlightening program to be enjoyed by all that were there. We had a member return to the club after many years of being gone and are glad to welcome him back. We have a few events coming up in the next month that we all want to be aware of;

- 1) club picnic on Saturday, May 7, 2016, at 11:00am at the Ocmulgee Indian Mounds in the main picnic area, We ask that you bring at least one food dish with you to the picnic and your beverage. Also, bring a

donation to be added to the silent auction.

- 2) We have a couple of trips coming up – Hogg mine in LaGrange, Georgia: site for collecting rose quartz, smokey quartz, aquamarine, and tourmaline. This trip is on Saturday, April 16.

The second trip is to Jackson's Crossing Amethyst Mine in Wilkes County, Georgia. This site is a premier collection site for quartz and amethyst. This trip is April 23, 2016.

There is also a weekend of collecting at Graves Mountain (same weekend of the Jackson's Crossroad dig and they are fairly close to each other so it is possible to participate in both.) This site has **barite, jarosite, phosphosiderite, variscite, quartzite, quartz, rutile, ilmenite, kyanite, pyrite, lazulite, pyrophyllite, hematite, goethite, limonite, sulphur, iridescent hematite, etc..**

It is recommended that you bring plenty of hydration and food with you for the day. Remember your safety glasses, gloves, boots, knee pads, rock picks, crack hammers, scratching tools, etc.

We talk about our mineral of the month but I decided to for us to use the birthstones as the Mineral of the Month this year. The birthstone concept first came to us from *Flavius Josephus* (1st Century AD) when he compared the 12 stones of Aaron's breastplate and the 12 signs of the zodiac. It was in Exodus 28 that Moses gives the instructions as to how to make Aaron's breastplate. The names we have today though are not the original names of the stones and only representations on them. The names roughly translated to colors instead of specific gemstones. Each of the colors was to represent one of the 12 tribes of Israel. However, we do not know the actual order of the stones due to the fact we don't know if they are in the order that we read them or as the masoretic text. The



masoretic text is the language it was written in, it is considered to be the authoritative Hebrew and Aramaic text. It is written from right to left where as we all read from left to right. But as time went by, gemstones were associated with the colors and thus assigned to each month. The concept of the gemstones having special powers came from the association of the zodiac signs. It wasn't until recently that the concept of people wearing their birthstones became a popular idea. In 1912, the *National Association of Jewelers* (in the USA) defined what the birthstones were for each month.

In 2002, the *American Gem Trade Association* (AGTA) added tanzanite as a birthstone for December.

If anybody has any ideas for future programs or trips, please feel free to notify me via email or phone.

jgsouter@windstream.net
 478.454.7273

Many thanks and I'll see you all soon....

Jim Souter



Very Big News

The Mid-Ga Gem and Mineral Society received 2 free scholarships for lapidary classes at Wildacres or William Holland School of Lapidary Arts.

These scholarships were given to us by Southeast Federation through the Stamp Program. The Stamp Program is being discontinued and they giving out the remaining money in the account and our club received 2 of the scholarships.

The scholarships are valid for this 2016 year only! It only pays the \$370.00 double occupancy tuition. The tuition includes a class, meals, room and board. It does not include any travel expenses, material fees, lab fees, or the difference between a single room with a private bath \$530.00.

Classes are only available at William Holland during week of June 5 – 12, 2016 and Wildacres during the weeks of August 22-28, 2016 and September 19-25, 2016.

See details about the workshop information at:

www.sfmsworkshops.com/info.html

See details about class information at:

www.sfmsworkshops.com/schedule2016.html

The rules to enter the drawing for a free week lapidary class at Wild Acres or William Holland School of Lapidary Arts:

1. Must be a member of the club as of February 2015.
2. Not have won our drawing in the last two years.
3. Be 18 years or older.
4. You are willing to give a presentation at one of our monthly meeting on you experience/learnings at the school.



To enter your name you must pass all the above rules and put your name in the drawing by contacting Jim Souter cell # 478-454-7273 or Phillip Hargrove cell# 478-550-8199 or by being at the picnic and entering at that time. **The drawing will be at the May Picnic.**

Please only enter if you know you can attend one of the classes, we lose the scholarship if not used in 2016!

For any questions please call one of the above people.



Annual Picnic coming soon!

The club annual picnic will be on **May 07, 2016**. It will be starting at 11:00 am at the Ocmulgee Indian Mounds. It will be held at the picnic tables by the museum parking lot. We will be having a silent auction during the picnic. We have had a lot of fun with the silent auction in the past years. You can get some really nice specimens for a good price.

The club will furnish the barbeque and paper products. Everyone should bring a covered dish, your drinks, and a couple of items (more if you want to) to put in the silent auction, it can be rock related or not. Oh, don't forget your money for the items

you win at the silent auction. So everyone come and have a good time. See you there and may the high bidder win!

Note: We will be drawing for 2 scholarships that must be used this year only for Willian Holland or Wildacres, at the picnic. So be sure to get your names to Jim or Phil if you are not going to be at the picnic. More details in this newsletter under "Very Big News".

April Meeting Minutes

The meeting was called to order at 7:38 PM by Jim Souter with 10 members and two guests present.

Old Business

The treasurer's report was read and approved.

Jay needs more content to fill the 600 bags to sell at the GA National Fair this year. Please collect specimens to fill as many bags as possible. Not only has Tina Perkins, our long time member, already sewn all these bags but she brought 600 kaolin specimens she had bagged to be included. As soon as we have sufficient specimens to start filling bags, Jay will print the lists to be enclosed and host the bag filling events.

New business

We welcomed James O'Neil, Librarian for the Middle GA Regional Library, as a newly rejoined member. He had been a member first as a teenager. We also have a new member, Colt Pandolei, age nine, who is Sylvia's grandson. Colt wasn't able to attend this meeting.

There are three rock digs coming up soon: GA Hogg Mine is April 16th near LaGrange, GA, requires you be a member of a



club and costs \$35 per person; Graves Mountain is April 22nd, 23rd and 24th, 8AM-6PM near Washington, GA and does not require club membership; and Georgia Jackson's Crossroads Mine is April 23rd in Wilkes County and does require club membership.

Jay advised that the Museum of Arts and Sciences would like for our club to host two Saturday programs at the museum. One program will be in the last two weeks of June and the other in the last two weeks of July. We will set up manned table exhibits for 5 to 6 hours on the Saturday we have chosen in each month to help people identify rocks and have hands on experience with rocks that our club will provide. We will determine exact dates and times at our next meeting which is Monday May 2nd.

The program where our club collected used postage stamps for collectors abroad has been closed. At the termination our club received two certificates of \$370 value to allow two scholarships for a week's training at either Wild Acres in NC or William Holland in Young Harris, GA. The dates are June 5th-12th, August 22nd-28th and September 19th-25th. We have a schedule explaining what type training is available on these dates. The classes include double occupancy on site. There has to be a minimum of three people for a class to be held and the maximum per class is six. We will determine the requirements for qualification to attend and discuss at our next meeting.

Our annual picnic will be May 7th at the Ocmulgee National Monument (Indian Mounds) at 1207 Emery Highway, Macon, GA starting at 11AM. Each member is asked to bring a covered dish, drinks and items to be sold at our silent auction. The club will provide BBQ, plates and utensils.

This month's mineral was diamond. Jim Souter discussed many interesting facts about diamonds.

Our own Tina Perkins, a high school teacher of 28 years, gave a fascinating program on her role teaching and sharing her involvement with NASA, Project Astro, Lunar Rocks, Meteorites and Tektites.

After this very informative program and an opportunity to ask questions and see exhibits, the meeting was adjourned at 8:45 PM.

By: Carol Glasgow

Need Help for an Event

The Museum of Arts and Sciences would like our club to setup a table or two on two different **Saturdays, June 18th and July 30th**. It is sort of open ended what we can do. The museum would like us to be there for at least 5 hours each time and do some type of hands on thing. Some possible things are Rock and Mineral ID, a show and tell, how to make things with rock like gem trees or cabochons, looking at micro-minerals with a microscope just to name a few things. We need 4 people at least to work each day. We will not be doing a presentation as such; people will just be stopping at our tables throughout the day. So, mark your calendar and help out. Please call Jay at 478-957-5002 if you can help.



Mineral of the Month Emerald

Formula: $\text{Be}_3\text{Al}_2(\text{SiO}_3)_6$

Color: Green from trace amounts of chromium and sometimes vanadium.

Hardness: 7.5-8 Mohs scale

Crystal: Hexagonal

Emerald is a member of the beryl family.

Fracture: Conchoidal

Very brittle

Emeralds are graded by eye. Due to the number of inclusions and surface breaking fissures, if no visible inclusions are visible, then it is considered flawless.

Stones that have slight flaws are treated with oil like *cedar oil* (due to having a similar refractive index). Other liquids, synthetic oils and polymers with the refractive index close to the emerald are also used. Another common liquid is *Opticon*.

Gems are graded on a four-step scale; *none*, *minor*, *moderate* and *highly* enhanced. These categories reflect levels of enhancement, not *clarity*. A gem graded *none* on the enhancement scale may still exhibit visible inclusions. Laboratories tend to apply these criteria differently. Some gem labs consider the mere presence of oil or polymers to constitute enhancement. Others may ignore traces of oil if the presence of the material does not materially improve the look of the gemstone

Emeralds were mined in Egypt since 1500 BCE, and India and Austria since as early as the 14th century.

Today, Columbia is the largest producer of emeralds with three main mining areas; Muzo, Coscuez, and Chivor. Zambia is the second largest producer of emeralds. Here in the US,

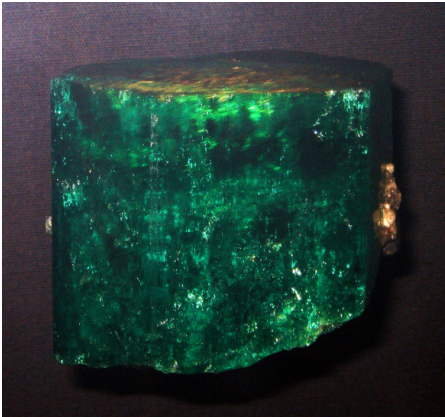
emeralds are found in North Carolina, South Carolina, Connecticut, Montana and Nevada.

Chalk Emerald: Was originally part of the royal coffers of the Baroda State in India. It had been originally set in a diamond necklace worn by Maharani Saheba, who passed it down to her son, the Maharajah Cooch Behar. It was recut from 38.40 carats to 37.82 carats and set into a ring with 15 carats of diamonds surrounding it. It was donated to the Smithsonian Institution's National Museum of Natural History in 1972. It is displayed prominently next to the *Hope diamond*. Emerald came from Columbia, SA.



Jorfer- public release for use 2007
Chalk Emerald

The Duke of Devonshire Emerald: The Devonshire Emerald was discovered in the early 19th century in the region of Muzo, Colombia, known for its fine colored emeralds with characteristic blue overtones. Weighing 1,383.95 carats with a height of about 2 inches, it is said to be one of the largest and finest rough Emeralds in the world.



The Duke of Devonshire Emerald

Gachalá Emerald: The Gachala emerald was found in the town of Gachala in Columbia, SA, in 1967. The emerald weighs 858 carats and is considered to be one of the most beautiful emerald gemstones known. The stone eventually ended up in the hands of Harry Winston, a jeweler in New York city. He donated the gemstone to the Smithsonian Institution. In 1958, Harry Winston donated the *Hope diamond* to the Smithsonian.



Gachala Emerald

The Patricia Emerald: This stone weighs in at 632 carats. It is a natural uncut stone of Columbian origin. It got it's name from the daughter of the man who owned the mine in Chivor, Columbia. It is a rare bi-hexagonal crystal with 12 sides. It was found in 1920.



The Patricia Emerald

Bahia emerald: This is a mass of emerald crystals from a Brazilian mine. The mass is over 840 pounds with 180,000 carat emerald crystals. The stone came from Bahia, Brazil. Ownership of the stone has been a much debated affair. It is aid to have been stolen on more than one occasion. In a court ruling on June 23, 2015, it was determined that FM Holdings, LLC was the bona fide owner of the Bahia Emerald. However, on June 25, 2015, a restraining order protecting the stone was issued, arguing that the stone is subject to forfeiture in Brazil since they are contesting it saying it was smuggled out of the country there. It has not been resolved yet.



Field trips coming up, lets go digging!!!



**An Official Field Trip of the
Henderson County Gem and
Mineral Society
(Hendersonville, NC) (HOST)
An Official Field Trip of the
Mid-Ga Gem and Mineral
Society**

Friday, May 20, 2016
Vulcan Quarry and Mineral
and Lapidary Museum
Hendersonville, NC

Saturday, May 21, 2016
Treasure Valley the former
Lookadoo Gold Mine (Fee Site)

TRIP (May 20) : Vulcan Quarry and Hendersonville Mineral and Lapidary Museum. Hendersonville Vulcan Quarry is where they mine the beautiful Henderson Augen Gneiss which is unique to this area.

NO COLLECTING: A Vulcan Quarry employee will lecture on materials they find, collection methods and other interesting facts. After a short hike we will see a working pit mine. Pictures below.

FEE: There is no cost.

SPECIAL CONDITIONS: Participants will walk about a half mile to the quarry from the lecture room.

BRING: No special equipment other than walking shoes are needed as this is not a collecting trip. Water bottle might be a good idea.

DIRECTIONS AND WHERE TO MEET:

Interstate 26 exit 49 (Hwy 64 East/Batcave) continue .6 miles and meet in Ingles Grocery Store parking lot near the corner of Hwy 64 and Howard Gap Road at 12:30.

After the Quarry visit at 3:30 you are invited to a meet and greet at 400 N Main St Hendersonville at the Mineral and Lapidary Museum.

CONTACT: Margaret Gilbert 828-674-1625 gilbert3487@att.net





TRIP (May 21) : Treasure Valley near Nebo NC. Treasure Valley is only open to scheduled groups. Treasure Valley is located in the South Mtn. gold belt. It was formerly the Lookadoo mine. Lookadoo was a working gold mine in the late 1800's and early 1900's. The owner will give a tour if you are interested in the history.

COLLECTING: Gold and native stones are found in the stream or you may work from dry dirt. Pictures below.

FEE: \$35 each. If we have more than 20 people the cost will reduce to \$30. For an additional fee: 1 camping site with water and electricity and 2 dry camping spots with electricity for campers are available for Friday night if we have at least 8 people interested. Tent camping would also be available. Facilities are outhouses and you would need to bring your own water.

BRING: To work the material you would need a gold pan, buckets, shovel and classifiers. Water shoes are a must.

DIRECTIONS AND WHERE TO MEET: Exit 46 off Interstate 40. Meet at Lowes Truck stop at 9am.

CONTACT: Margaret Gilbert
 828-674-1625 gilbert3487@att.net
 If you want to camp let me know and I'll get you the information.

Southeastern Gem & Mineral Shows

May 6, 7, & 8, 2016

Franklin, NC

Gem & Mineral Society of Franklin, NC

Fri. & Sat., May 6th & 7th, 10:00 AM - 5:00 PM
 Sun., May 8th, 10:00 AM- 4:00PM
 Carpenter Community Center, 1288 Georgia Rd. (US441), Franklin, NC

No admission charge, indoor, climate controlled, rough and finished gemstone and jewelry, minerals, fossils and demonstrations.

Contact: Norman Holbert, 828-634-0350, normholbert@comcast.net

**The Georgia Mineral Society's
 48th Annual Mother's Day Weekend
 Gem, Mineral, Jewelry, and Fossil
 Show May 6, 7, 8, 2016
 Cobb Civic Center**

**548 South Marietta Pkwy SE
 Marietta, GA 30060**

FREE Parking! Over 30 Dealers! Door Prizes!
 Auction on Saturday at 1:00 pm
 Friday: 10 am – 6 pm
 Saturday: 10 am – 6 pm
 Sunday: Noon – 5 pm



Mid-Georgia Gem Clips
Official Bulletin of Mid-Georgia Gem
and Mineral Society
Macon, Georgia

The Club meets on the First Monday of each Month, at The Museum of Arts and Sciences, in Macon, Georgia.

Except: No meeting January, July, and August. The annual Christmas Party is the first Monday in December. September the first Tuesday of the Month

Purpose: To promote the earth sciences, the lapidary arts, and the collection, study and display of rocks, minerals, and fossils; to promote the public awareness of these efforts in educational and recreational activities.

Club Officers:

President / Web Master: Jim Souter,
 ph. 478-454-7273, jgsouter@windstream.net

Vice President: Phillip Hargrove, 478-862-5327
 Cell 478-550-8199 susanbphilh@pstel.net

Secretary / Photographer, Richard Arnold,
 ph. 678-682-9860 rarnold216@charter.net

Treasurer: Susan Hargrove, 86 Clear Branch Rd,
 Butler Ga. 31006, cell. 478-837-5327,
susanbphilh@pstel.net

Editor / Programs: Jay Batcha,
 4220 Cyndy Jo Circle, Macon, Ga. 31216,
 ph. 478-784-1965, Cell 478-957-5002
rocky1s@cox.net

Education Chairperson: Tuell Walters,
 ph. 478-922-7200
supernova1346@gmail.com

Stamp Program: Ron Davis, ph. 478-788-2616

Club year begins November 1st, a grace period of three months will be given before membership lapses.

Mid-Georgia Gem & Mineral
Society
Application for Membership

Name(s) _____

Address _____

City _____

State _____ Zip Code _____

Phone _____

Adult(18+) \$10.00 Junior \$2.50 New

Renewal _____

E-mail _____

Address _____

List your interests and reasons for joining _____

Make checks payable to:
 Mid-Georgia Gem & Mineral Society
 Mail to the Treasurer (listed on this page) or
 bring to a meeting.



**Mid-Georgia
Gem Clips**

**Official Bulletin of Mid-
Georgia Gem and Mineral Society
Macon, Georgia**

**Member of Southeast Federation of
Mineralogical and Lapidary Societies
Member of American Federation of
Mineralogical Societies**



Mid-Georgia Gem Clips

Jay Batcha, Editor
4220 Cyndy Jo Circle
Macon, Ga. 31216

Save Commemorative Stamps